



# Opening School Facilities

## **Year 2 Impact Report**

April 2023 to March 2024



## What is Opening School Facilities (OSF)?

OSF is a funding programme from the Department for Education, supporting schools to open their existing sport facilities for the benefit of the wider community. This includes partnering with sporting organisations who can help deliver activities.

OSF is aimed at tackling inequalities among pupils and the wider community from four distinct groups:



People from lower socioeconomic communities (including pupils eligible for free school meals and from low affluent families)



People from ethnically diverse communities



Women and girls



Disabled people and those with long-term health conditions (including pupils with SEND)



The support from OSF has been fantastic and accommodating. The current funding allows us to keep the classes financially stable. ”



The support given from OSF has helped us to improve our plan for physical activity going forward; encouraging us to reach more members of the community by planning clubs for 24/25 such as self defence classes. ”

(Quotes are from case studies and teacher survey)

## The objectives of OSF

- Support schools to open their facilities outside of the normal school day (evenings, weekends, and holidays) to allow children, young people and the wider community to access more opportunities to be physically active.
- Open school swimming pools, focusing on swimming and water safety lessons both during and outside the school day for pupils at their school and other local schools.
- Provide participants with a range of stimulating and enjoyable opportunities to take part in physical activity and sport, in addition to those provided within PE lessons and extra-curricular activities. This means new and additional extra-curricular activities are eligible.
- Participants are signposted to take part in the same or similar activities in their local community, following the end of their participation in the programme.

“ Our facilities are now better to allow us to attract more participation in sport and activity. ”

“ Without the funding we would not have been able to deliver any of these sessions. ”



Booking systems, facilities, access to site, specialist equipment



School staff, sport leaders, community coaches



Increasing opportunities, broad range of activities locally



Relationships with partners, school-club links

## Our approach

We worked closely with education and community physical activity partners in each district to identify schools who could apply for the funding. We did that considering a number of factors:

- What were they currently offering to their community?
- Access to facilities
- Expressions of interest
- Where the school was situated
- The schools IDACI score (Indices of Deprivation Affecting Children Index)

“ We now have excellent relationships with external partners. ”

From there, we offered to support schools to use youth voice and the results of wider consultation to develop a project plan that allowed them to meet the needs of students and the community as a whole.

Schools were asked to apply for up to £20,000 in their first year, with up to £10,000 available in the following financial year to support a sustainable project.

We created district targets for Year 1 and 2 of the funding for the number of schools as part of the programme linked to the amount of schools in each area.

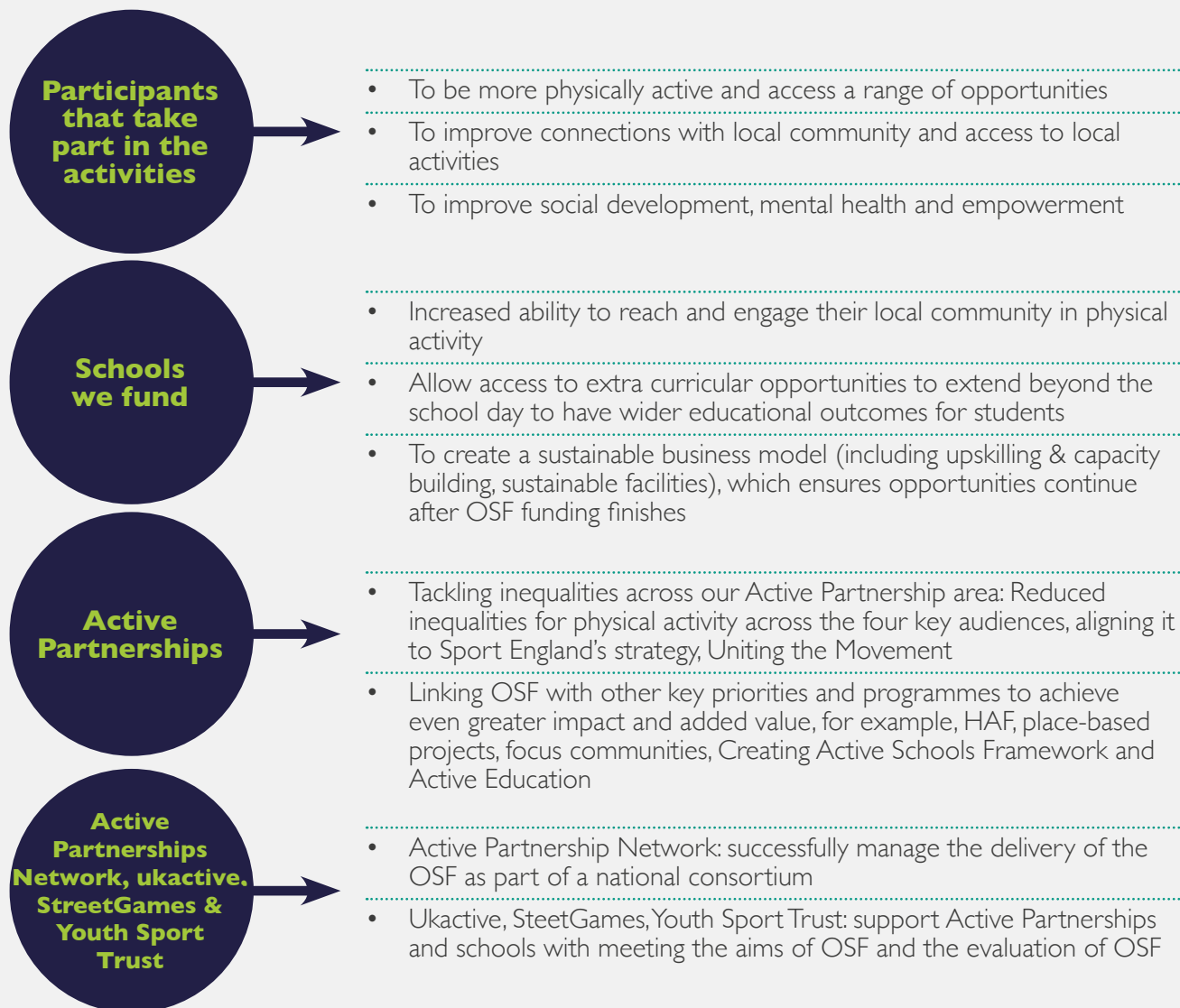
We also considered the number of pupils in a district accessing Free School Meals as well as the school being in an area of high deprivation. Schools with access to their own swimming pools were identified to develop specific swimming projects.

With some schools already receiving funding from elsewhere, we introduced a focus to increase the number of secondary schools involved, working with Active Schools Groups, School Games Organisers, Local Authority Partners and Multi Academy Trust PE & Sport Leads.

All applications from schools were reviewed by a panel made up of national project partners, including Yorkshire Sport Foundation, Youth Sport Trust and Street Games. From there, we guided the successful schools in completing monitoring and evaluation requirements and the process of claiming their funding.

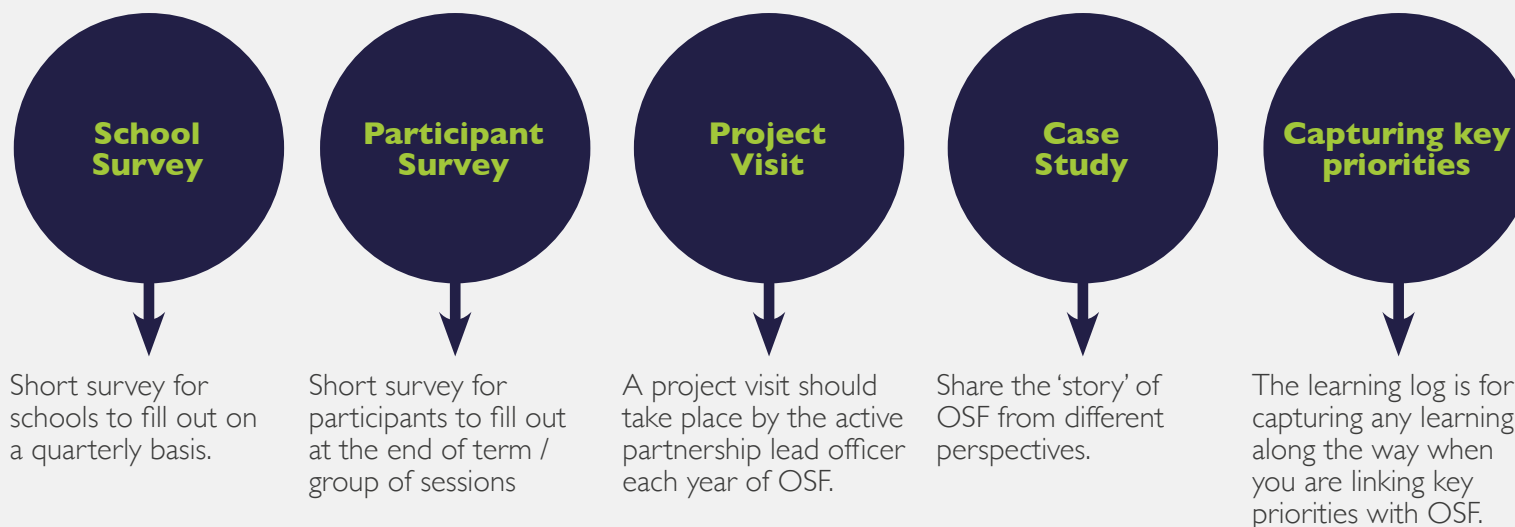
We created a monthly newsletter, monthly online drop in sessions and were in regular communication with schools around their projects. Yorkshire Sport Foundation staff also visited more than 40 schools to provide face-to-face support throughout the year.

## Aims



## National Evaluation

The purpose of the evaluation is to show how OSF has achieved its overall aims, and how its lessons learnt can be used to inform future delivery and ensure the sustainability of school facilities after the programme has finished.



## Year 1

Feb 23 to March 23

YSF schools spent and claimed

**£203,685.37**

in 6 weeks

## Year 2

### 83 Schools funded

between April 23 and March 24

**Barnsley**

10

**Doncaster**

10

**Rotherham**

12

**Bradford**

11

**Kirklees**

10

**Sheffield**

11

**Calderdale**

2

**Leeds**

12

**Wakefield**

5

## Year 2

Total funding spent & claimed  
**£1,117,185.71**

## Year 2

Community Participation  
(sessions evenings, weekends and holidays)

**8,624 individuals**  
**25,903 attendances**



## Year 2

**13,493 children and young people** with **88,287 attendances** accessing activities on school sites for extra-curricular activities

## Year 2

**42%** of projects targeted at children on Free School Meals

**43%** of projects targeted at ethnically diverse communities

**63%** of projects targeted at women and girls

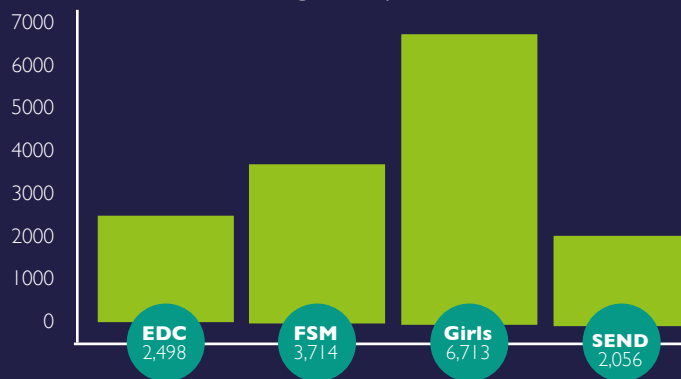
**17%** of projects targeted at SEND participants

**Where was support targeted?** We used pupil level data which considers the postcodes of the children in the school rather than the school postcode data. It shows that 53% of schools who are taking part in OSF are in the top 20% for deprivation according to the pupil IDACI data (Income Deprivation Affecting Children deciles 1 and 2) and 65% of schools are in the top 20% for deprivation according to pupil IMD (Indices of Multiple Deprivation deciles 1 or 2).

## South Yorkshire



Target Populations



EDC stands for ethnically diverse communities, FSM means free school meals, SEND stands for special educational needs and disabilities



**3,207**  
sessions delivered



**5,265**  
individual children

**36,451**

attendances of children



**6,405**

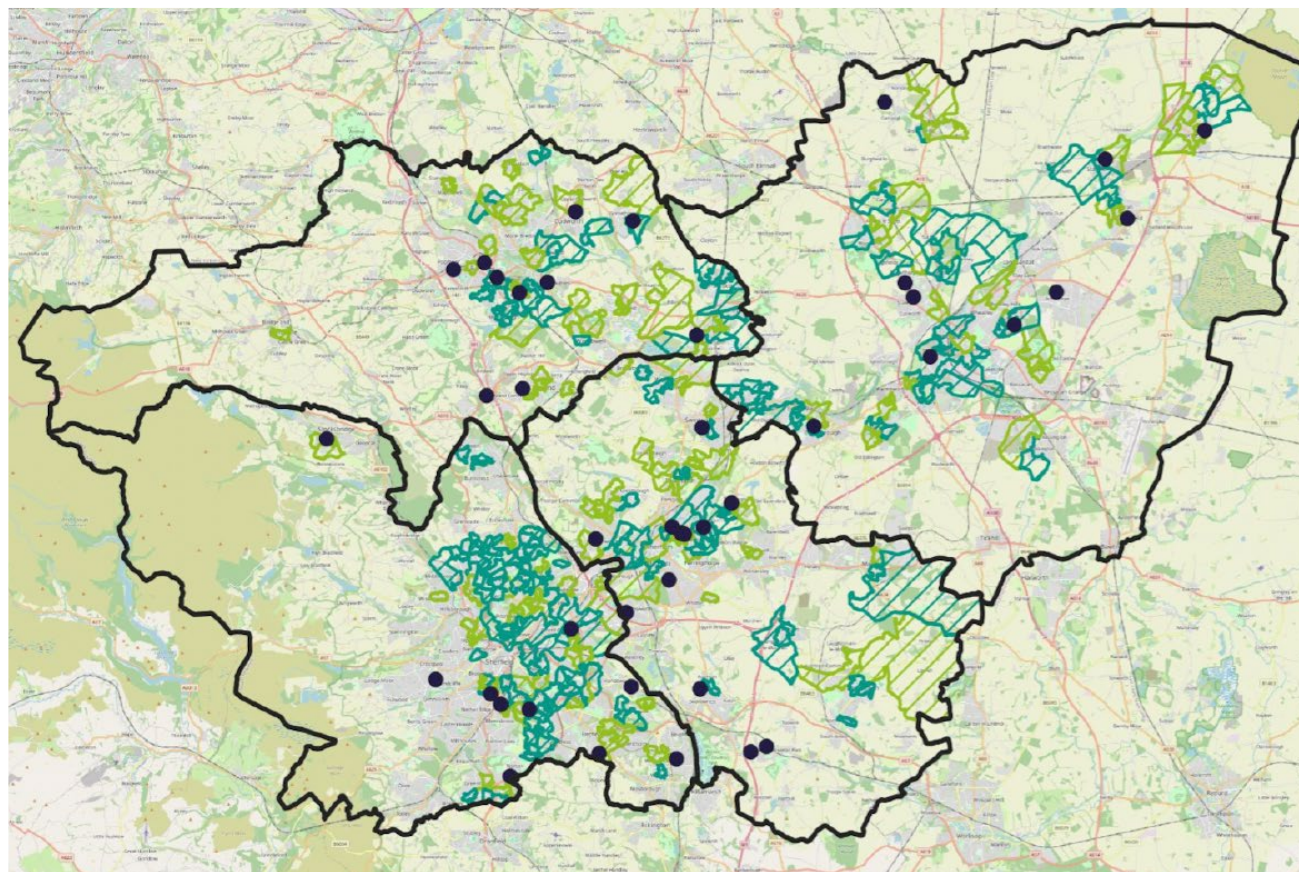
participants from the community

**15,407**

attendances from the community



## South Yorkshire - £543,833.19



**Key**



IDACI = 1

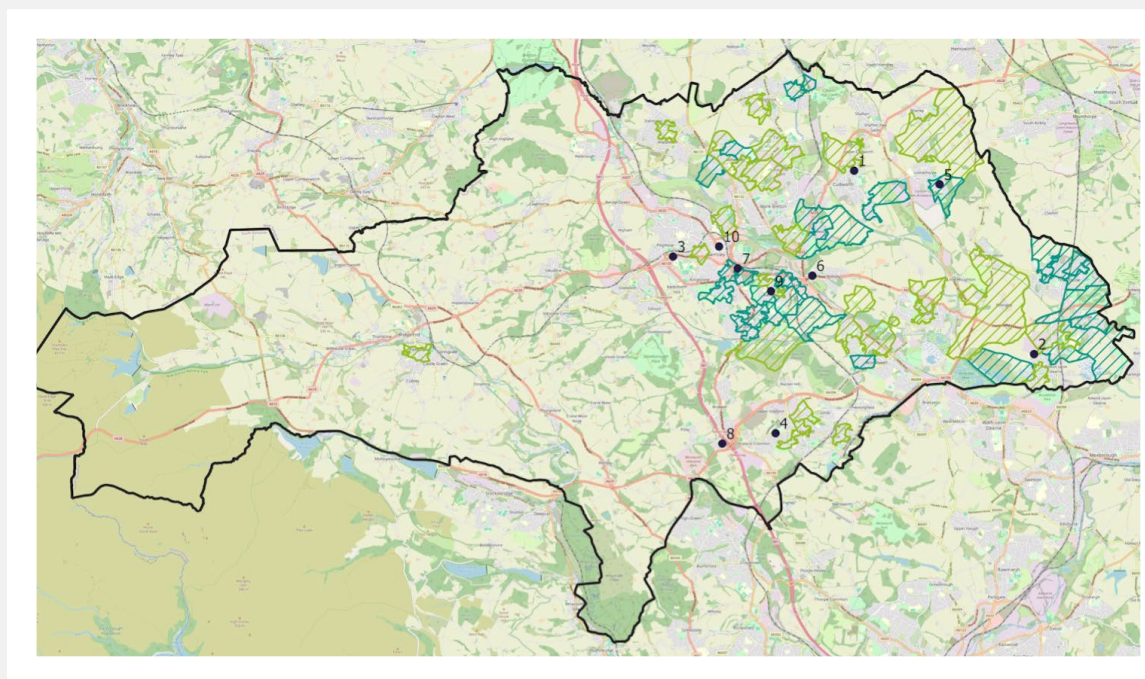


IDACI = 2

● School

## Barnsley Schools

Number on map	School
1	Churchfield Primary School
2	Heather Garth Primary Academy
3	Horizon Community College
4	Kirk Balk Academy
5	Ladywood Primary School
6	Oakhill Primary Academy
7	Oakwell Rise Primary Academy
8	Tankersley St Peter's Cof E (Aided) Primary
9	The Forest Academy
10	Trinity St Edwards



Total Spend - £151,500.91

**Key**



IDACI = 1



IDACI = 2



School

## Kirk Balk Academy

Funding has allowed the school to provide extra opportunities for students to take part in sport through the development of Community Coaches, delivering activities to students and the wider community after school, but before community club lettings each evening.

In the first two terms, the school offered extra football sessions for students and younger siblings by linking with local primary schools. This increased enrichment participation figures significantly, whilst allowing students the opportunity to become more active by adding to what weekly PE lessons provided.

In particular, girls benefited as they felt more comfortable coming along to a non-competitive session. This increased their confidence and led to many attending other football sessions across the school.

The school also delivered a range of other sports including gymnastics, trampolining and cricket where children from the local area accessed facilities and equipment they usually wouldn't have been able to.

## Ladywood Primary School

Following community and parent consultation, the school have provided a daily multi-sport youth club for children aged 5+ working with external sports coaches.

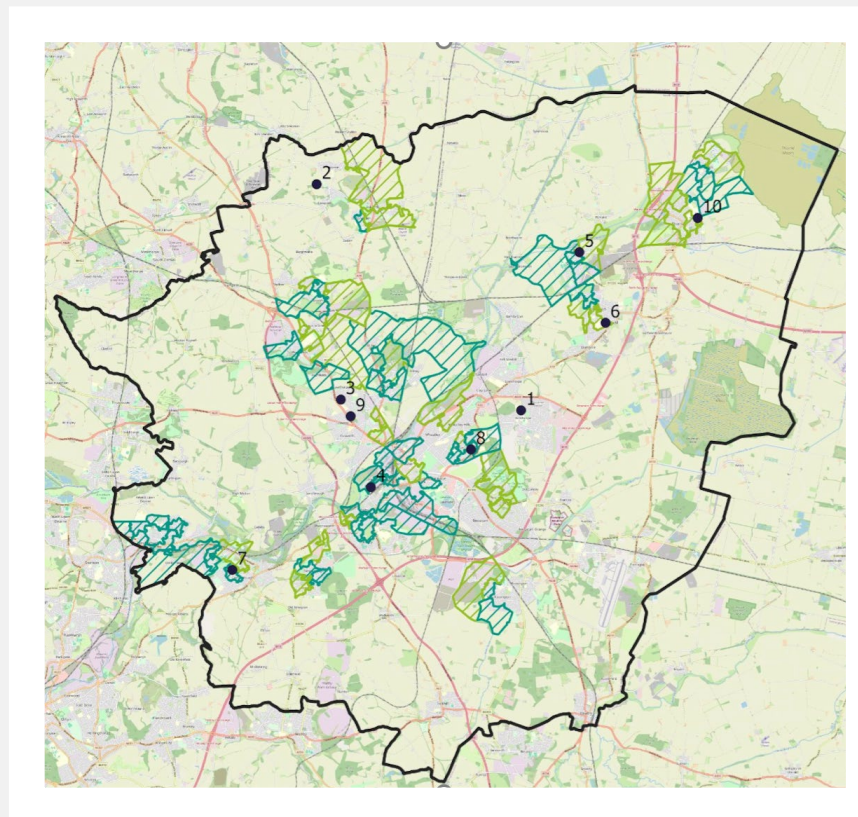
The sessions have been popular and had a positive effect on children's engagement with school. The school have highlighted increased confidence and team skills for those taking part, as well as providing the opportunity to connect with other children outside their normal friendship groups.

As a result, the school has seen increased engagement in other extra-curricular sport, and competition from those attending the youth club activities weekly. They have seen individual development in specific pupils, including looked after children and those on free school meals who may otherwise not have the opportunity to engage in enriching physical activity outside of school.



## Doncaster Schools

Number on map	School
1	Armthorpe Shaw Wood Academy
2	Campsmount Academy
3	Don Valley Academy
4	Hexthorpe Primary
5	Stainforth Kirton Lane Primary School
6	Ash Hill Academy
7	De Warrene Academy
8	Plover Primary school
9	Sunnyfields Primary Academy
10	Trinity Academy



Total Spend - £131,307.26

**Key**  IDACI = 1  IDACI = 2  School

## Plover Primary School

The community focused project kicked off with a vibrant, fun and active community colour run.

This was extremely popular with specific groups such as pupils with SEND, who had not experienced anything like this before. This event was also used to capture community voice around activities people would be interested in.

As a result, community activity clubs were provided from October to March and included girls' football, bicycle and scooter clubs, and playground games.

Up to 30 children attended each of the clubs every week from the Intake, Wheatley and Armthorpe community areas of Doncaster. The school had extremely positive feedback from parents, often pointing to the new friends children were making.

Most activities were aimed at children who access free school meals in school providing them with free activities outside of school time.

The school also identified girls to engage in the clubs and provided the opportunity to try football, leading to high numbers of participants and some girls joining local football teams.



> Watch the video on our OSF playlist

## Campsmount Secondary

The school have implemented various sports sessions in community time which has allowed participation pathways from school, into after school provision and community use. The school have used funding to provide for SEND and girls activities, as well as train staff.

Activities at the secondary school have allowed primary aged children to experience a wider range of activities.

The school has n pupil who has additional needs and is also a looked after child.

He has participated in the community football session which has increased his confidence as he approaches the transition from primary to secondary school.

This session is an example of how positive experiences at the school venue for transition have allowed for a positive process, and has allowed him to feel much more confident on his move to secondary school.

The school have also had attendances from a range of participants who do not engage in any other physical activity outside of school, and have had excellent feedback from parents in finding something local for their children to take part in.



“ This session is an example of how positive experiences at the school venue for transition have allowed for a positive process, and has allowed him to feel much more confident on his move to secondary school. ”

## De Warenne Academy

The sessions at De Warenne have been transformational for a number of students at the school.

The school have offered many different sports working with a wide range of external sports providers, and creating lasting sustainable links from school to community sport.

Activities have been both individual and team sports as well as leadership opportunities across both KS3 and KS4.

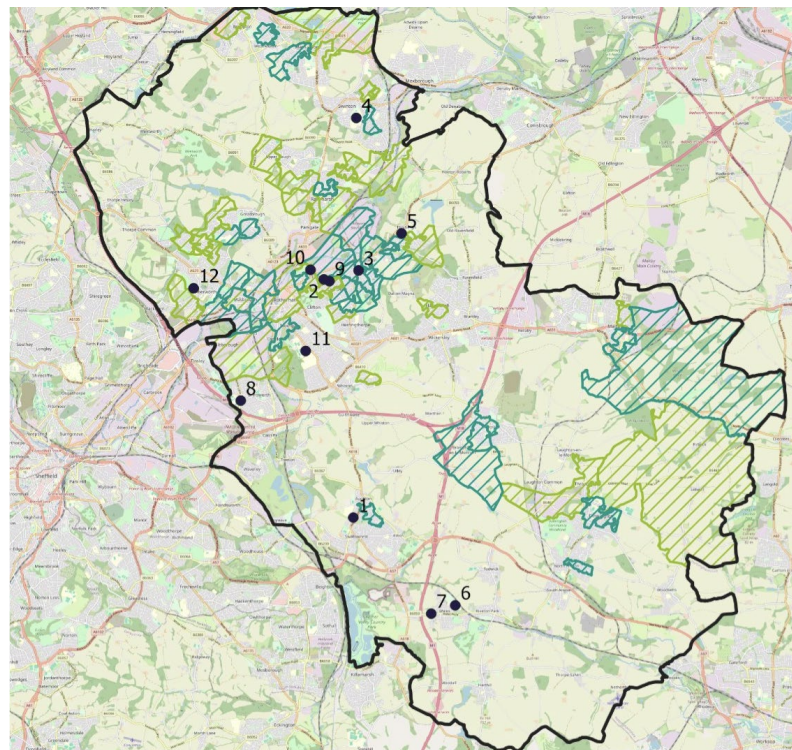
The newly trained sports leaders have supported a range of other activities both in school and the community.

Sessions have allowed a wide range of students to take part in extra-curricular activities and the school has seen new students take part in sport for the first time. A number have continued this outside of school and joined a local club.



## Rotherham Schools

Number on map	School
1	Aston Academy
2	Coleridge Primary School
3	High Greave Junior School
4	Swinton Academy
5	Thrybergh Academy
6	Wales High School
7	Wales Primary School
8	Brinsworth
9	East Dene Primary
10	Eastwood Village Primary School
11	Oakwood High School
12	Winterhill Academy



Total Spend - £126,078.57

Key



IDACI = 1



IDACI = 2



School

## Coleridge Primary School

Coleridge Primary has offered ten different physical activity opportunities, working with eight local clubs and providers. Activities have ranged from boxing to circus skills, gymnastics to Nerf wars, creating a diverse selection that appeals to everyone.

Each half-term has been different, with boxing/fitness the only mainstay throughout the year. This has allowed children to experience new activities and helped with new participants and kept people coming back.

Most providers offer local opportunities outside the school taster sessions. Several children have joined Rise Dance and Unity Boxing sessions as a result.

The funding has helped Coleridge Primary to become a focal point for physical enrichment activities locally, creating an established service which now forms part of the wider school day for so many families.



## Wales Primary School

Wales Primary School has had a swimming pool since the 1970's, providing lessons to pupils in school ever since, only closing for the first time during the Covid-19 pandemic. In previous years, the cost of maintenance, heating and lessons has been met from the school budget. The school managed to re-open the pool in 2022 but the cost of upgrading plant equipment, increasing heating and maintenance costs, against a background of serious budgetary pressures, meant that it was highly unlikely the school would be able to keep it open the following financial year.

The OSF funding meant that the school could keep the pool open, update plant equipment and meet maintenance costs, pay energy bills, training costs and buy swimming and life-saving equipment along with the costs of coaching. They have trained site facilities staff on pool maintenance to allow in-house maintenance of the pool as well as providing additional pool time for targeted groups of young people. The investment in upgrading the plant equipment will allow the pool to be useable for some years to come.

The children have a full term of weekly swimming lessons in FS2, Y1, Y2 & Y3. In Y4 and Y5 children have a half-term of swimming lessons including catch up lessons for any less confident swimmers yet to meet the national swimming requirements.

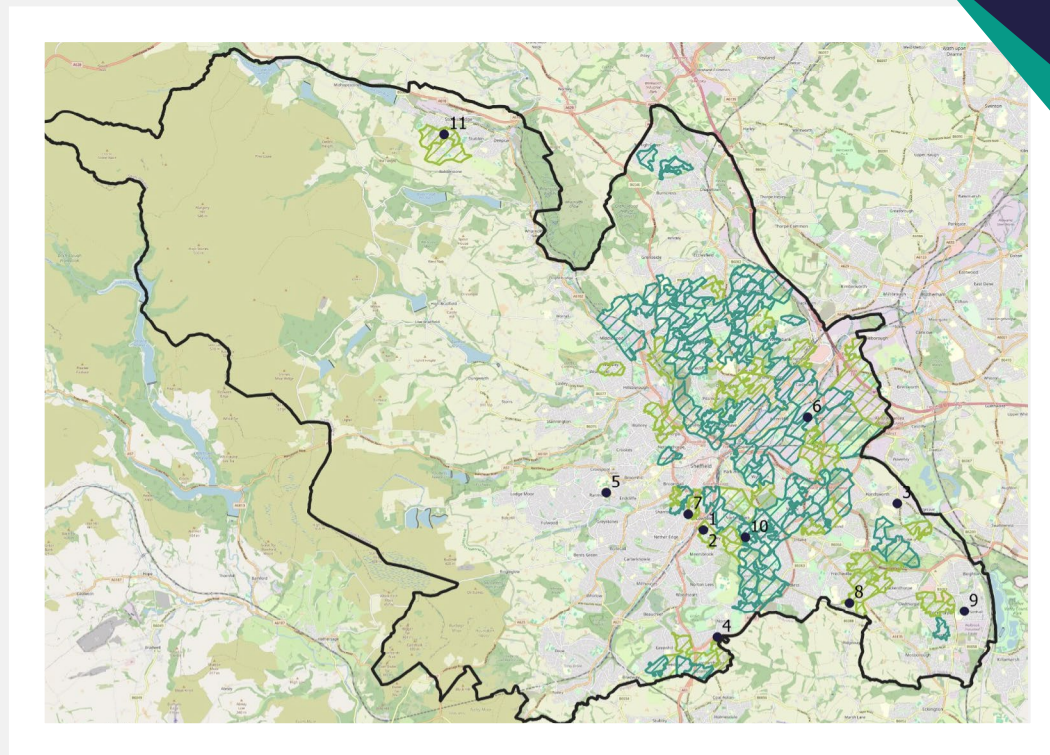
Before transitioning to secondary school, children receive extra sessions on water safety. The school arrange individual lessons to meet the needs of SEND pupils and over the last two years, every pupil has accessed swimming lessons in school.

In addition, the grant has also enabled the school to open the pool for community use two nights per week. Lessons take place for other children within the community who may not otherwise be able to access local swimming lessons



# Sheffield Schools

Number on map	School
1	Anns Grove Primary School
2	Forge Valley School
3	Handsworth Grange Community Sports College
4	Mossbrook School
5	Notre Dame High School
6	Phillimore Community Primary School
7	Sharrow Nursery Infant and Junior School
8	The Birley Academy
9	Westfield School
10	Arbourthorne
11	Stocksbridge High School



Total Spend - £134,946.45

**Key**  IDACI = 1  IDACI = 2  School

## Mossbrook School

Mossbrook School is a Special Educational Needs School for 170 pupils in the South East of Sheffield. The school has access to swimming facilities on site but due to the rise in pupil numbers and ability of swimmers, has used the funding to access additional swimming facilities locally.

The school has employed a member of staff to take regular swimming sessions, including pupils from their local hub site, twice a week. Additionally, the school caretaker attended a Pool Plant course, meaning the on-site pool is maintained and safe.

The funding has allowed a member of staff to complete a Level 1 and 3 swimming course and additional SEN swimming CPD. On completion of the course, school will offer additional sessions throughout the week as well as opening their swimming facility on a Friday for other groups to use.

The funding has also allowed the school to buy new resources for the pool, from swimming aids to specialist equipment to aid water confidence and safety, and to allow access for a wider range of pupils. Some pupils do not access swimming outside of school due to their additional needs as well as parent confidence and accessible lessons in community time.

The school has seen a large impact on pupils with some accessing a pool for the first time, and some becoming competent swimmers due to more time in the water.

The school is also working with Water Babies to introduce water confidence sessions to the local community, using the funding to support the development of the sessions and the cost of opening and maintaining the pool for them.

“ The funding has allowed a member of staff to complete a Level 1 and 3 swimming course and additional SEN swimming CPD. ”

## Arbourthorne Primary School

The school has used funding to support SEND pupils by providing access to additional swimming at their local pool, as well as delivering inclusive table tennis activities on school site. These opportunities have increased physical activity, increasing confidence to engage in wider opportunities across the school day, and allowed pupils to learn a new activity beneficial to supporting emotional regulation within school.



The school has also developed staff to deliver family Zumba sessions for the local community on site, with a focus on mums' within their local area. This has been a success in engaging parents and creating an increased positive relationship between the school and the community. Since the start of the project, the Zumba sessions have allowed families to engage in physical activity together, as well as to socialise more with others.



## Phillimore Community Primary School

The school is in an area of high deprivation in Sheffield, serving an ethnically diverse community. Almost 60% of pupils are entitled to Free School Meals and 98% of pupils have never been in a swimming pool before moving into Y4. The school trialled taster swimming lessons for Y3s as early intervention, and working closely with the Sheffield School Swimming Service, devised a bespoke programme delivering four lessons of water-based games. The programme has been so successful that it is now part of the Swimming Service's curriculum used with other schools across Sheffield as an introduction to beginners.

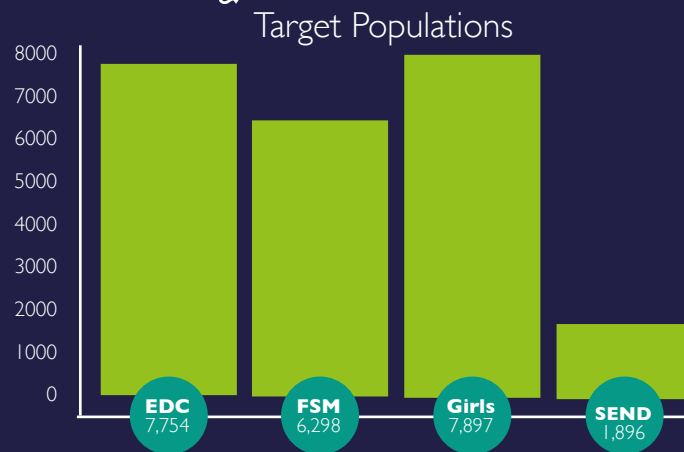
In September 2023, the school found that all Y4s were more water confident and better prepared for their swimming lessons, leading to a 53.8% increase in pupils achieving National Curriculum expectations compared to this time last year.

This was followed up by the offer of family leisure swims in the summer holidays to maintain confidence and for pupils to showcase to parents/carers what they had learnt. These became very popular weekly water introduction lessons for all the family. As part of the Easter HAF programme, school were able to fill every free swimming lesson offered to pupils via Sheffield City Trust, with parents/carers more receptive to the importance of learning to swim.

The school are now in negotiation with Sheffield School Swimming Service to use their summer holiday swimming programme as a pilot for other areas in Sheffield with low swimming attainment, using other possible funding as a way to make the initiative sustainable locally, more with others.

“ Almost 60% of pupils are entitled to Free School Meals and 98% of pupils have never been in a swimming pool before moving into Y4. ”

## West Yorkshire



EDC stands for ethnically diverse communities, FSM means free school meals, SEND stands for special educational needs and disabilities

**2,961**  
sessions delivered

**8,228**  
individual children

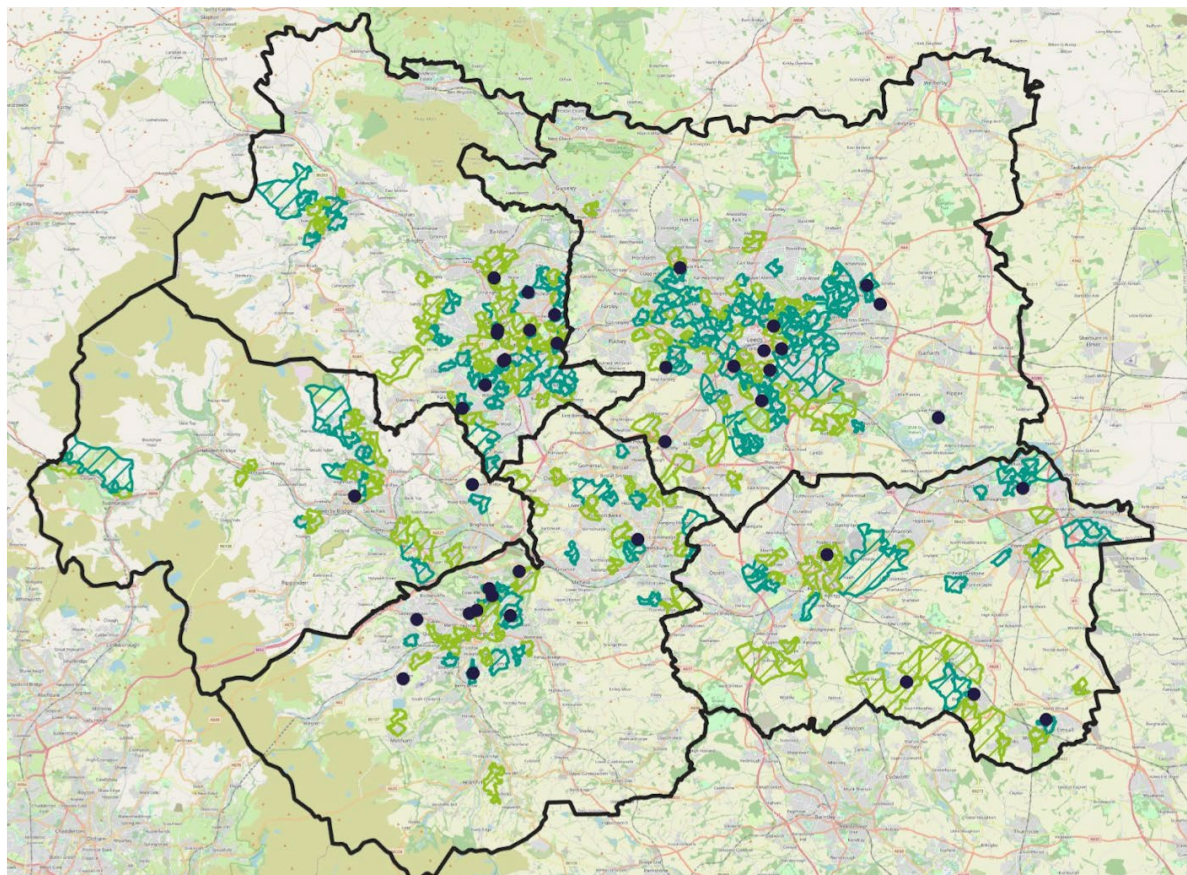
**51,836** attendances of children

**2,219**  
participants from the community

**10,496**  
attendances from the community



## West Yorkshire - £573,352.52



**Key**



IDACI = 1

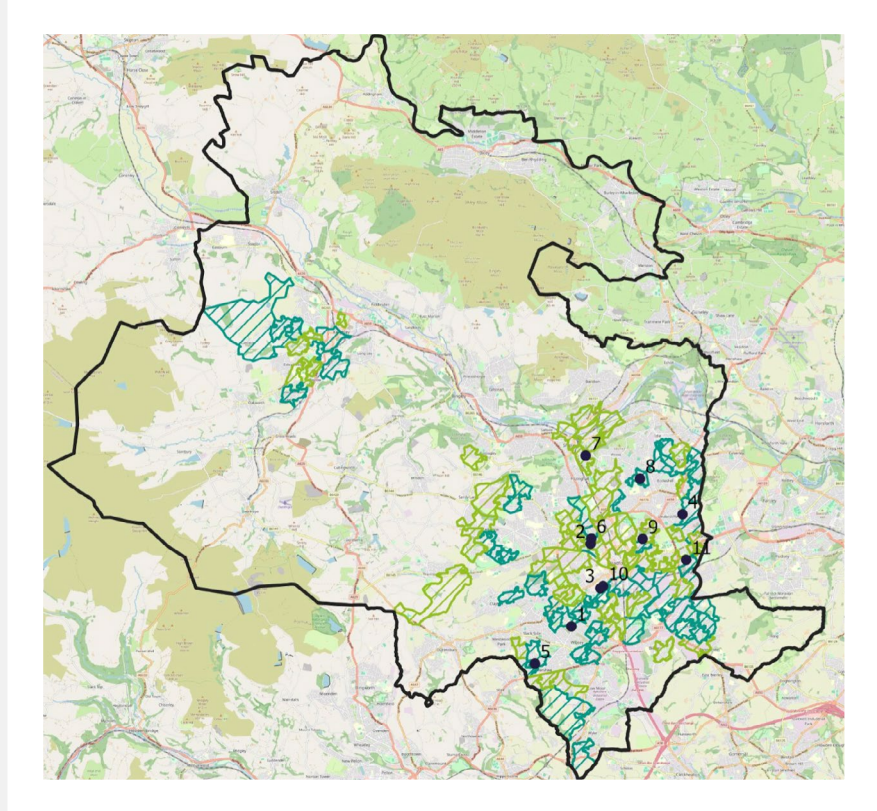


IDACI = 2

● School

## Bradford Schools

Number on map	School
1	Co-Op Grange
2	Dixons Manningham
3	Dixons Music
4	Fagley Primary School
5	Farfield Primary and Nursery School
6	Green Lane Primary School
7	High Crag Primary Leadership Academy
8	Swain House Primary School
9	Carlton Bolling
10	Dixons Academy McMillan
11	Laisterdyke Leadership Academy



Total Spend - £141,414.70

**Key**  IDACI = 1  IDACI = 2  School

## Carlton Bolling Academy

The installation of a state-of-the-art all-weather pitch was a fantastic opportunity to let the facilities to local community clubs. The school used part of the funding to develop part-time recreation assistant roles, who support and manage the bookings. The members of staff check-in in each club, ensure the facilities are maintained, and safeguarding processes adhered to. As more clubs and teams have accessed the facilities, the income generated has made the roles sustainable.

The school also wanted to bring new activities to students, and through a staff-led initiative named 'Sporting Excellence',

badminton, golf and archery were provided. There were weekly coaching sessions with seminars led by experts in their respective field. Archery has proven so popular that the school are now looking to create a self-sustained community archery club on the school site, and they have also used the funding to work alongside a badminton coach two hours a week.

Due to the popularity of the sessions, the coach has set up a community junior badminton club at the school with students regularly attending.



> [Watch the video on our OSF playlist](#)

## Co-op Academy Grange

Using pupil voice, Co-op Academy Grange learned that students wanted fitness as part of their extra curricular offer, in particular teenage girls, who felt unable to join their local gym due to financial and cultural barriers.

The school invested in a new fitness suite and the numbers of students staying after school for physical activity increased drastically.

The fitness suite is exclusively open for female students twice a week after school, with more than 30 students attending regularly, many are from South-East Asian and Roma communities. Students have commented on how safe they feel and how they can exercise in a welcoming environment with other girls.

The fitness suite has also been opened to staff and other members of the community after school, and is very well attended.



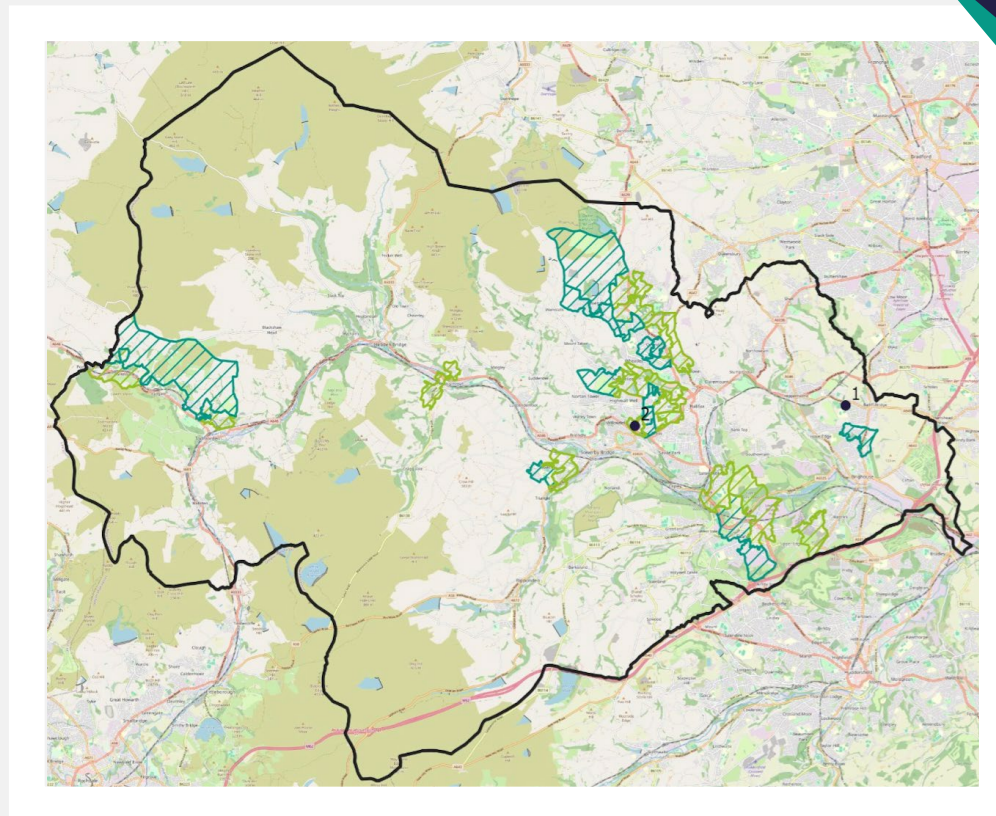
“ Students said how safe they feel and how they can exercise in a welcoming environment with other girls. ”

## Calderdale Schools

Number on map	School
1	Lightcliffe Academy
2	Warley Road Primary Academy



Total Spend -  
£30,550.85



**Key**  IDACI = 1  IDACI = 2  School

## Lightcliffe Secondary

With a lack of local opportunities and increased interest in women's football after the success of the Lionesses in the Euros, Lightcliffe Academy wanted to provide opportunities for girls to play the game.

They bought more football equipment such as football posts, nets, balls and agility equipment.

The school set up a new Lionesses extra-curricular club that saw more and more girls play each week, and supported the creation of a team that entered the schools national cup competition.

A number of the girls have now started playing at local grassroots clubs, including five who had never played before. One grassroots club now uses the new school facilities for their sessions.



## Warley Road Primary

Warley Road Primary used funding to improve and adapt their swimming pool so it's accessible for children with additional needs, both in school and also for the local community.

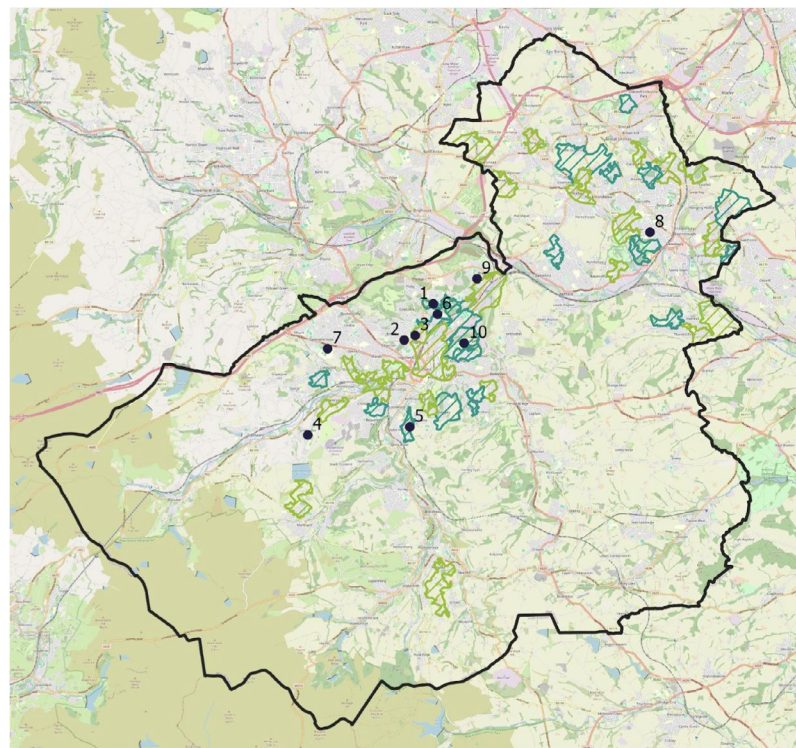
That included making it a sensory pool for children with more complex needs and the school delivered a range of sessions focused on young people with SEND. The funding has allowed staff to access specific SEND Swimming CPD and deliver inclusive swimming to young people in school time as well as school holiday specific provision for SEND Swimming.

The school also opened their pool further to the community, including mother and daughter swim sessions and targeted lessons for children from ethnically diverse communities. The school has also opened to other local primary schools for pupils who would benefit from increased provision.

“ The funding has allowed staff to access specific SEND Swimming CPD and deliver inclusive swimming to young people in school time as well as school holiday specific provision for SEND Swimming. ”

## Kirklees Schools

Number on map	School
1	Ashbrow School
2	Birkby Infant and Nursery School
3	Birkby Junior School
4	Colne Valley High School
5	Newsome Academy
6	North Huddersfield Trust School
7	Salendine Nook High School Academy
8	St John Fisher Catholic Voluntary academy
9	St Thomas CE (VC) Primary School
10	Netherhall Learning Campus High school



Total Spend - £137,466.02

Key



IDACI = 1



IDACI = 2



School

## Newsome Academy

The funding has bought new mats and equipment so the climbing wall can be used for the first time in over ten years, attracting young people who did not participate in traditional team sports throughout school.

Through their School Games Organiser, the school has also introduced activities such as cycling and skateboarding that are growing in popularity and aimed at children who would not usually engage in extracurricular activity. The school have purchased cycle maintenance equipment which has allowed school to not only maintain the bikes for the club, but allowed young people to learn how to maintain their own bikes and the fleet of bikes at school.

Activities have been provided specifically for girls and have further developed community sports provision, such as the introduction of girls only football. These sessions have been popular and allowed further development of the Barclays Girls Football Schools Partnership locally to ensure transition from school football to community participation.

The funding has also allowed the school to purchase trampolines from another school where they were not being used. This has increased the number of trampolines available and meant the school and community trampoline club can increase its capacity. As part of the programme, staff have also accessed CPD in trampolining to ensure sustainability beyond the funding.



## Colne Valley High School

Colne Valley High School sports hall opening hours have gone from strength-to-strength over the past few years with the support of the Opening School Facilities Grant. Originally, funding was focused on increasing female participation during extracurricular clubs and providing a range of alternative activities using female coaches and outside providers.

From capturing pupil voice, the school became more aware that there was very little on an evening in the local community for the girls to continue their interest in being active. The second half of the project in year two has therefore had an increased focus in transitioning girls from school to community activities to support their 30 minutes outside of the school day.

By opening the facilities to local sports clubs and providers, the participation rate for girls taking part in activity outside of school has soared - not only in the evening clubs but also for school clubs and teams.

The school now has three girls football clubs and two netball clubs for school age participants, and also an adults netball community club for the girls to move onto, which is also engaging parents and older siblings.

The netball coaches of both clubs have discussed how fantastic it is to have access to the facility 12 months of the year.

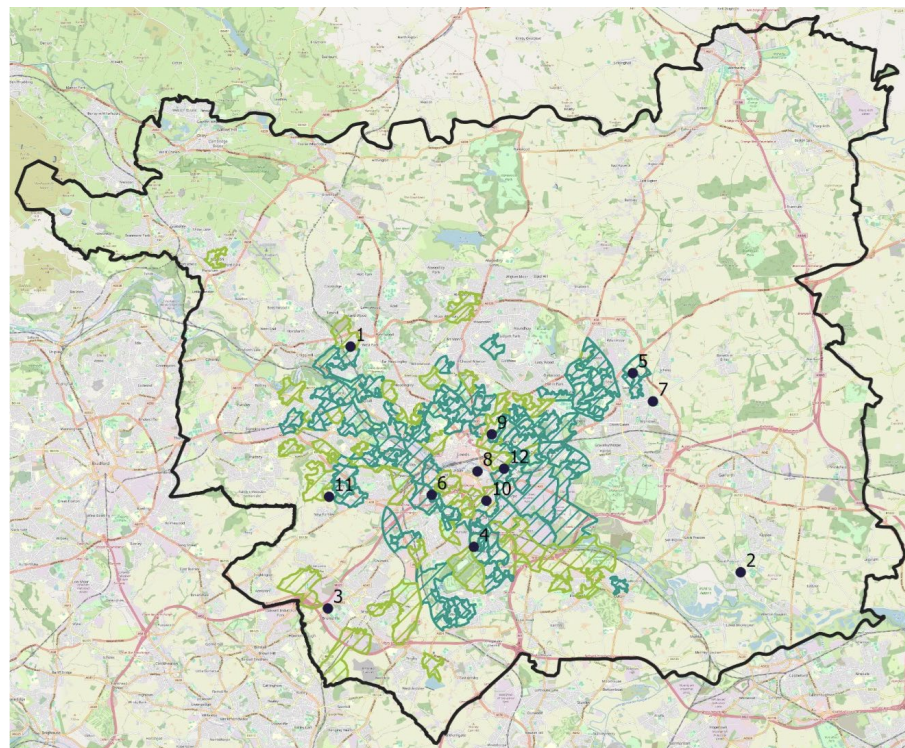
From further consultation, the school are looking to introduce more activities for other girls and have included badminton as a focus activity. A local club has now been set up on an evening and the school will continue to explore other opportunities for activities to be started in the school. The success of the project has been in allowing activities to take place in a safe space, where the girls are familiar with, and are comfortable in walking through the door.

“

Originally, funding was focused on increasing female participation during extracurricular clubs and providing a range of alternative activities using female coaches and outside providers. ”

## Leeds Schools

Number on map	School
1	Abbey Grange
2	Brigshaw High School
3	Bruntcliffe Secondary
4	Cockburn John Charles Academy
5	Grimes Dyke Primary School
6	Ingram Road Primary School
7	John Smeaton
8	Ruth Gorse Academy
9	Shakespeare School
10	St Josephs School
11	The Farnley Academy
12	The Richmond Hill



Total Spend - £196,237.67

**Key**



IDACI = 1



IDACI = 2



School

## Shakespeare Primary School

The school has established a community table tennis club, providing opportunities for current and past pupils, plus community members to get involved. The aim was to provide an option for young people to do something active at a time in the day when there is very little to occupy them locally. Local facilities are very limited and not accessible, and the club has brought together different age groups of children who may otherwise not interact.

The school has successfully developed table-tennis as a sport of high levels of participation and excellence, reaching national finals. However, once leaving school there were no local opportunities to play and the community would struggle to travel to continue to take part. The school have increased the numbers and diversity of young people attending the club and hosted friendly matches with other another community organisation also trying to harness the interest in table tennis.

Girls from ethnic minority groups have been able to both start and maintain participation in a sport that they have asked for and the club also has high number of participants from the Roma community.

The club has been attended by two local Councillors who are interested in the community cohesion impact of the club locally and the power of sport. The project has also raised the profile, at a political level, for the need to support opportunities for active play in the community.



“ The school has successfully developed table-tennis as a sport of high levels of participation and excellence, reaching national finals. ”

## Richmond Hill Academy

Richmond Hill Academy is situated within the most deprived postcode in West Yorkshire. Many children at the school access free school meals and are unable to access activities outside of school, resulting in high youth crime rates locally. The school used funding to create LS9 Club, delivering a wide range of physical activities for two hours, three evenings per week.

The school created it for the most vulnerable young people including Looked After Children, children who have had persistent absenteeism, as well as those new to the country. More than 130 pupils signed up and 90 attend each week, taking part in a range of sports delivered by partners including Leeds United Community Foundation, Leeds Rhinos and DAZL Dance. School staff attendance has led to more children engaged due to a trusted adult being present.

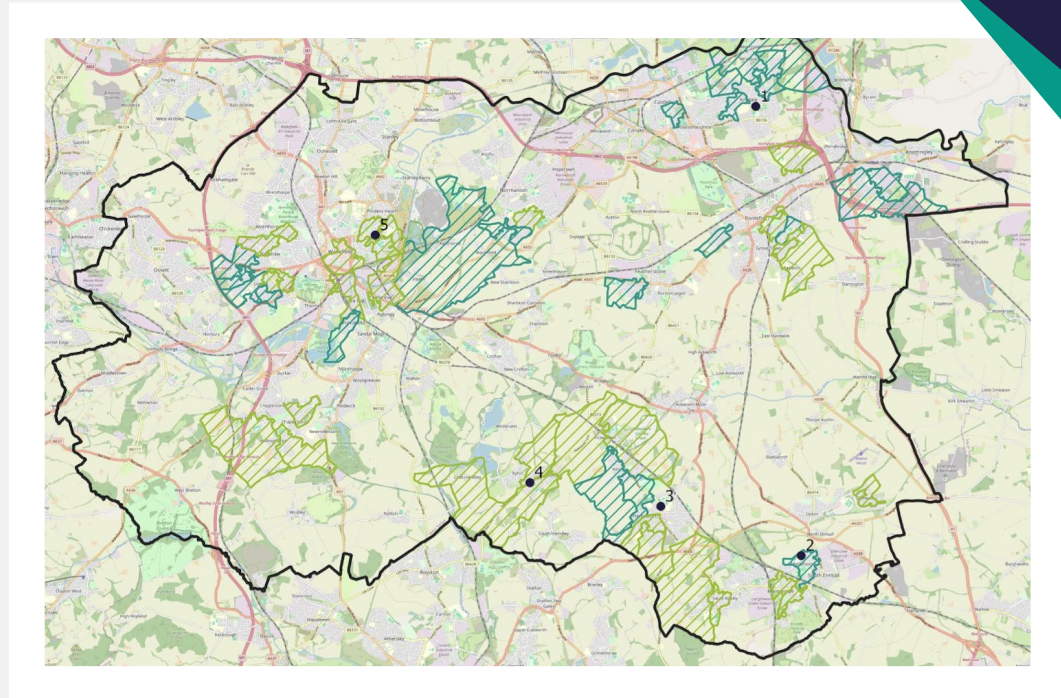
The school have also used other providers to deliver sessions around community safety and personal development. As a result of the project, the school have seen improved behaviour in school as well as increased attendances for certain children. The school have ensured that LS9 Club is a safe space, even for those who may have been suspended from the school, which has resulted in better relationships with pupils and even an increase in safeguarding disclosures from young people.



> Watch the video on our OSF playlist

# Wakefield Schools

Number on map	School
1	Airedale Academy
2	Minsthorpe Community College
3	Outwood Academy Hemsworth
4	Outwood Primary Academy Newstead Green
5	Outwood Primary Academy Park Hill



Total Spend - £67,683.28

**Key**



IDACI = 1



IDACI = 2



School

## Outwood Academy Hemsworth

The school is in a community where students have to travel to access activities and opportunities. Student voice in school highlighted there were a number of opportunities to play football locally, however other activities were very limited. The school has since developed a range of extracurricular and evening activities for students and the wider community, including a boxing facility on site, as well as holiday club activities.

The school has developed opportunities specifically for girls to access their fitness facility outside of school in girls only sessions, allowing the school to create a strong sense of partnership between PE staff and the students.

This has seen increased engagement from those who usually wouldn't have engaged in activities, and seen enthusiasm in physical activity increase across the school. Students taking part in boxing activities have continued to succeed and have now been invited to take part in a boxing programme outside of school.

## Minsthorpe Community College

The school created opportunities for all students to have free access to sports facilities during evenings, weekends and holidays through their MCC Activate Membership. The membership offer and activities have been provided for specific groups of students (inactive, SEND and disadvantaged) throughout the year. The school have also delivered a Fit Families aspect to their membership, where families have also enjoyed activities and the facilities at the school, especially working with those students with additional needs who may struggle to access the facility on their own.

The school has had many students access and use the facilities on a regular basis, including a high proportion of SEND and previous inactive students. The students have welcomed the flexibility of the memberships as well as being able to get involved in several different activities including badminton, fitness activities and basketball.



“ The school has had many students access and use the facilities on a regular basis ”





Follow us on   
[@YorkshireSport](https://twitter.com/YorkshireSport)

Yorkshire Sport Foundation, Nepshaw Lane South, Morley, Leeds, LS27 7JQ

[www.yorkshiresport.org](http://www.yorkshiresport.org)

Registered charity in England and Wales: 1143654